

# THINKWARE DASH CAM™ F70 PRO



F70 PRO  
Introduction



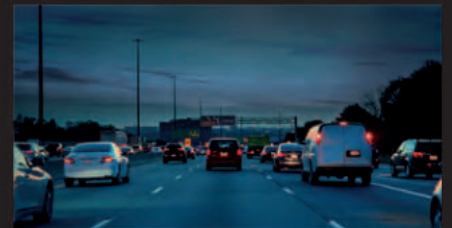
## Full HD 1080p

CMOS Image Sensors allow constant front view Full 1080p resolution during both daytime and nighttime



## Built-in Wi-Fi & Bluetooth

Connected dash cam with mobile. Easy access to View and download videos.



## Super Night Vision

SUPER NIGHT VISION uses ISP (Image Signal Processing) technology and the real-time image processing function to record clear, visible video in a low light environment when the vehicle is parked.



## Safety Camera Alerts

Safety Camera Alert function is on continuous alert to warn the driver of red lights and traffic enforcement camera.

\*Applicable when paired with Smartphone GPS or Optional GPS Antenna Accessory



## ENERGY SAVING PARKING RECORDING

In the Energy Saving Mode, the DashCam enters a "sleep mode" to conserve the car battery life and "wakes up" when an impact is detected to save the footage instantaneously.



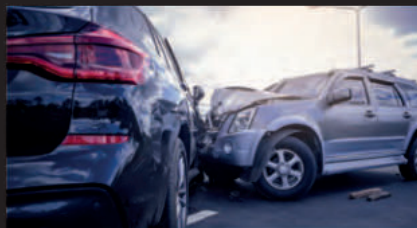
## FORMAT FREE TECHNOLOGY 2.0

F70 PRO utilizes the FAT (File Allocation Table) save system instead of the TAT system.



## HIGH-TEMPERATURE PROTECTION SYSTEM

The specially designed heat discharge construction and the built-in thermal sensor protects the device and its data against intense heat by automatically turning it off to prevent overheating.



## FAIL-SAFE RECORDING

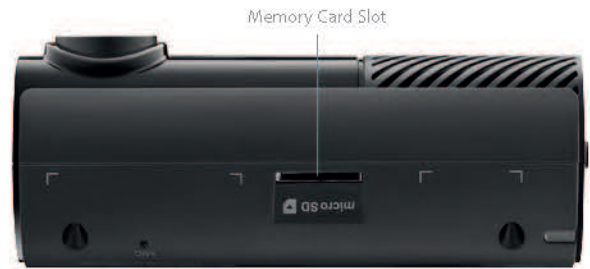
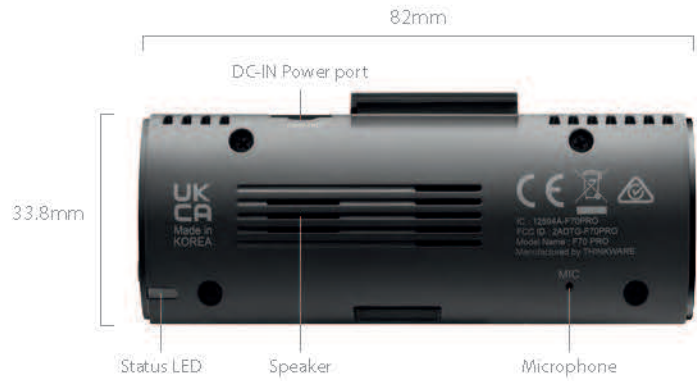
In the event that the power gets disconnected after an accident, the fail-safe recording uses the Super Capacitor for backup power to ensure safe storage of any recording in progress – so you can be assured that your valuable data will be securely stored under any circumstances.



## PC Viewer / Mac Viewer

View and download the recorded video from the PC/Mac viewer. The speed and location data can be displayed if the dash cam was connected with GPS antenna.

## PRODUCT DETAIL



## GENERAL SPECIFICATIONS

Dimension	82 X 33.8 X 34.6 mm (3.22 X 1.33 X 1.36 inch)	Weight	42.4g (0.093lbs)
Package	Front camera (main unit), Mount with tape (1ea), Mount tape (1ea), Cigar jack adaptor or Hardwiring cable, Adhesive Cable Holders (3ea), microSD memory card (32GB), Trim Tool (1ea), Warranty & CS information		

## DETAILED SPECIFICATIONS

Camera	CMOS image Sensor
Resolution	1080p Full HD (1920 x 1080)
Capacity	MicroSD card 16GB/32GB/64GB/128GB
Recording Modes	Continuous Recording, Incident Recording, Manual Recording, Audio Recording, Parking Surveillance Recording
Sensor	3-Axis Accelerometer G-Sensor (3D, $\pm 3G$ )
GPS	External GPS receiver (Optional)
Power	DC 12/24V supported
ETC	Operation Status LED, Thinkware Dashcam Link

\* Applicable when paired with Smartphone GPS or Optional GPS Antenna Accessory (For better accuracy, an Optional GPS Antenna Accessory use is recommended)

**THINKWARE DASH CAM™**  
THE WORLD'S LEADING DASH CAM BRAND